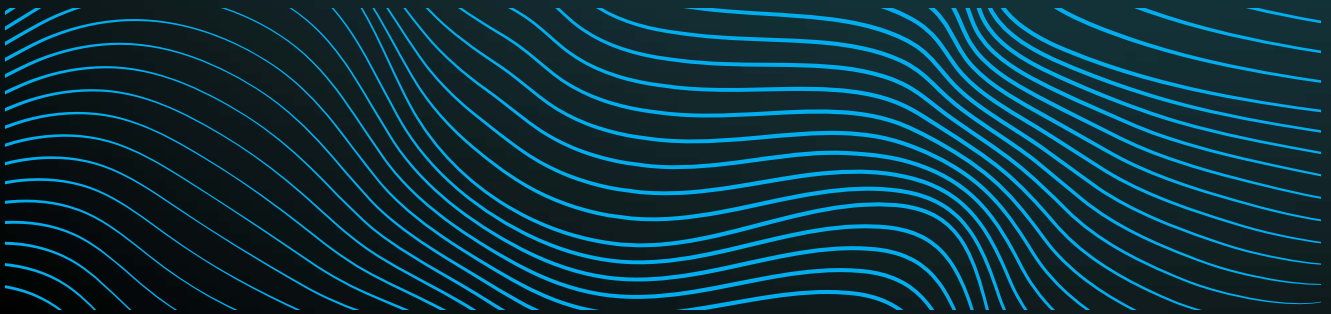
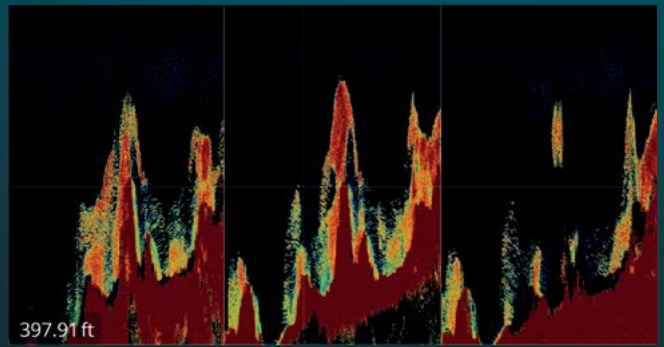
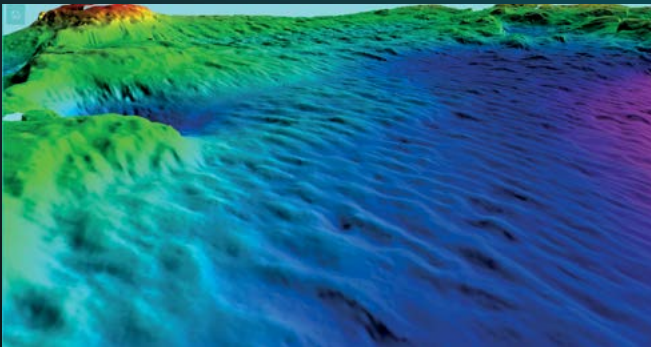


F3 WIDESCAN SOUNDER SERIES

MULTIBEAM FOR FISHERIES

# FIND IT ALL



**wassp**<sup>®</sup>  
MULTIBEAM

SEE IT ALL



# DISCOVER A NEW WORLD WITH THE LATEST INNOVATION FROM WASSP

---

Outstanding performance, versatility and value. That's what you expect and exactly what you get with the new **F3** sounder from WASSP.

This next generation multibeam sounder has been redesigned from the ground up around a new fully digital DRX transceiver. It delivers on every front – accurate, versatile, user-friendly and most importantly, scalable to your exact needs.

The only thing that hasn't changed with the **F3** is our commitment to bring you a multibeam sounder at a cost-effective price.

**wassp**<sup>®</sup>  
MULTIBEAM

SEE IT ALL

# F3

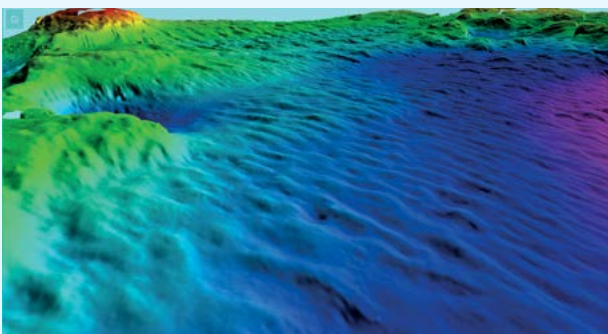
## WIDESCAN

- ▶ **New all-in-one digital DRX transceiver**  
Incredibly versatile and ready for the next technology advances
- ▶ **Wideband fully digital** 136 - 184kHz (F3), 68 - 92kHz (F3X-L; available Q4 2016) transducer technology
- ▶ **Choose your own functions** with new licensing options
- ▶ **Cost-effective solution** for multiple applications
- ▶ **Wireless capability** with optional licence
- ▶ **Easy to install/commission**
- ▶ **Turnkey solution offered** with position/heading and motion sensors
- ▶ **CDX** – Simplified user interface
- ▶ **TimeZero compatible** with optional licence (available Q1 2017)



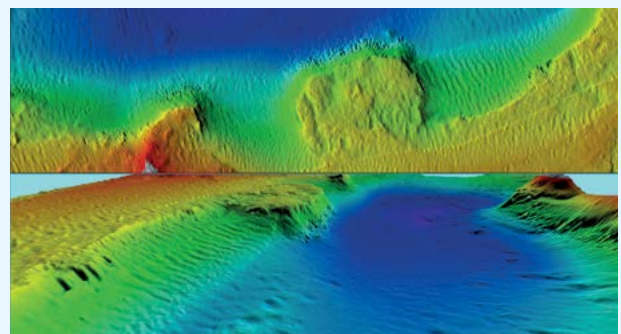
Multibeam Transducer

## GENERATE YOUR OWN PERSONAL MULTIBEAM CHART



The **F3** is set to revolutionise inshore fisheries with its Wideband CHIRP technology.

Scanning a 120 degree swath port to starboard and using 224 beams, the **F3** delivers each and every time. By using advanced signal processing, you get a complete picture of seafloor bathymetry with ease.





# DRX MULTIBEAM HARDWARE FOR THE FUTURE

This innovative all-in-one “black-box” is not just a robust hardware platform but also introduces **cutting-edge technical innovations and incredible versatility for finding your catch**. This opens countless new possibilities for your operations.



- ▶ Dimensions (L x W x H): 377 x 260 x 132mm
- ▶ Power supply: 9-32VDC

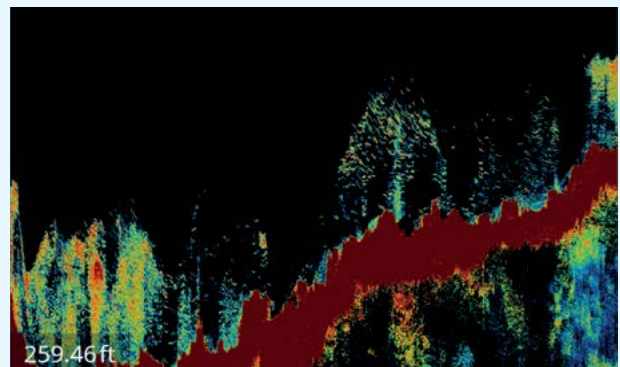
DRX

## NEW EASY-TO-USE INTERFACE

The **F3** introduces a new simplified WASSP CDX for control, visualisation and data management while still providing a comprehensive set of functions to meet the most demanding fishing requirements.



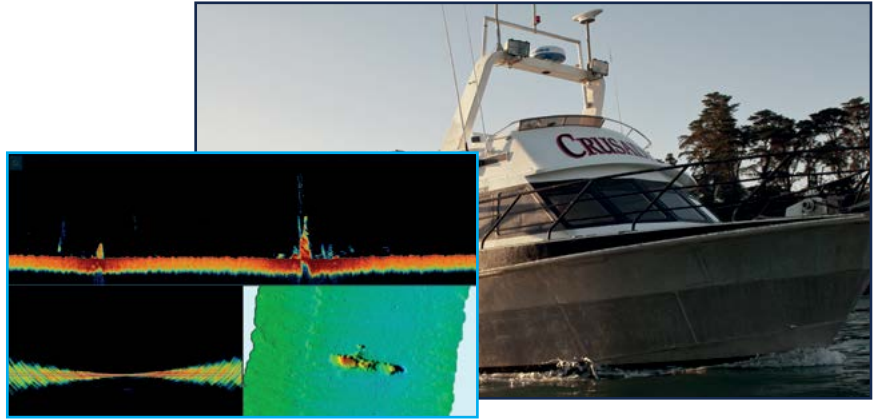
## UNPRECEDENTED CLARITY



## INSHORE FISHING

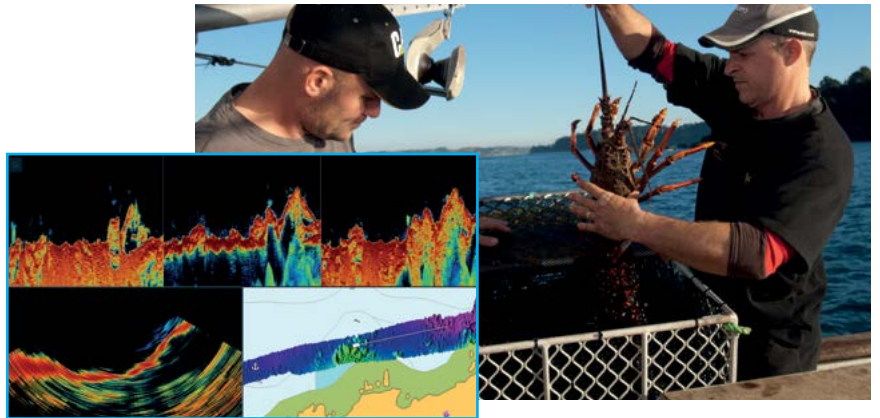
The scalable system has a wide range of features and capabilities; all manner of inshore fishing types can be optimised, ensuring efficiency and increased productivity in all fishing methods employed.

The system can be tailored for all types of inshore fisheries.



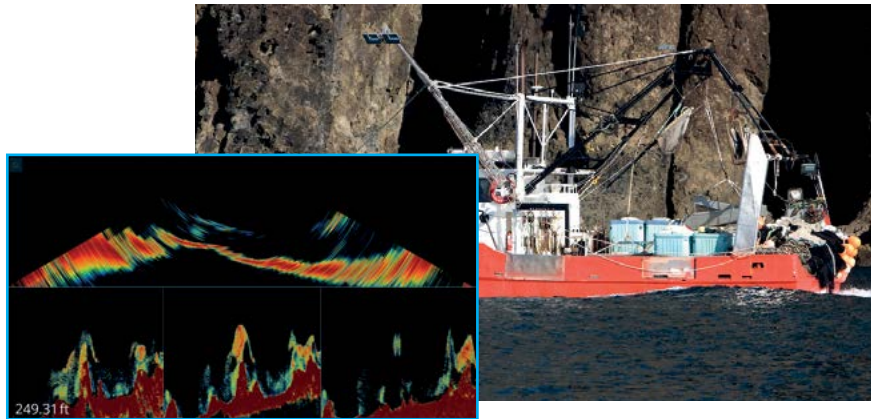
## POTTING

The 3D presentation of the seabed, coupled with the optional backscatter function, to aid in the assessment of seafloor hardness, ensures the best location of pots in a range of environments.



## TRAWLER

With accurate water column and seabed information at hand, skippers are better informed, and can make decisions ensuring they maximise their catch while minimising time at sea.



## SPORTSFISHING

With its 120° swath, baitfish shoals can be located quickly, allowing the presentation of lures and baits to marauding billfish and tuna. The wide band CHIRP technology employed provides amazing target separation of target species throughout the full water column.



# WASSP: ALWAYS GOING BEYOND

WASSP is part of the ENL Group, world leaders in marine sounder, radar and communications for more than 70 years. Based in the marine nation of New Zealand, which is in one of the world's largest marine economic zones, ENL continues to achieve and push boundaries in what is a challenging and dynamic industry.

We make software and hardware solutions for organisations working in surveying and mapping, defence, commercial fishing and workboats.

Our passion and commitment to real innovation is what sets us apart. We consistently bring to market game-changing technology and cost effective products with simple operation.

---

## Worldwide support

WASSP is sold and supported by a global network of authorised distributors.

We offer comprehensive technical and user training and can direct technical support worldwide if required.

We pride ourselves on world class product support.

---

## For more info or to find a dealer near you:

Visit **WASSP.COM**

P: **(+64) 9 373 5595**

E: **sales@wassp.com**

FB: **facebook.com/wasspmultibeam**